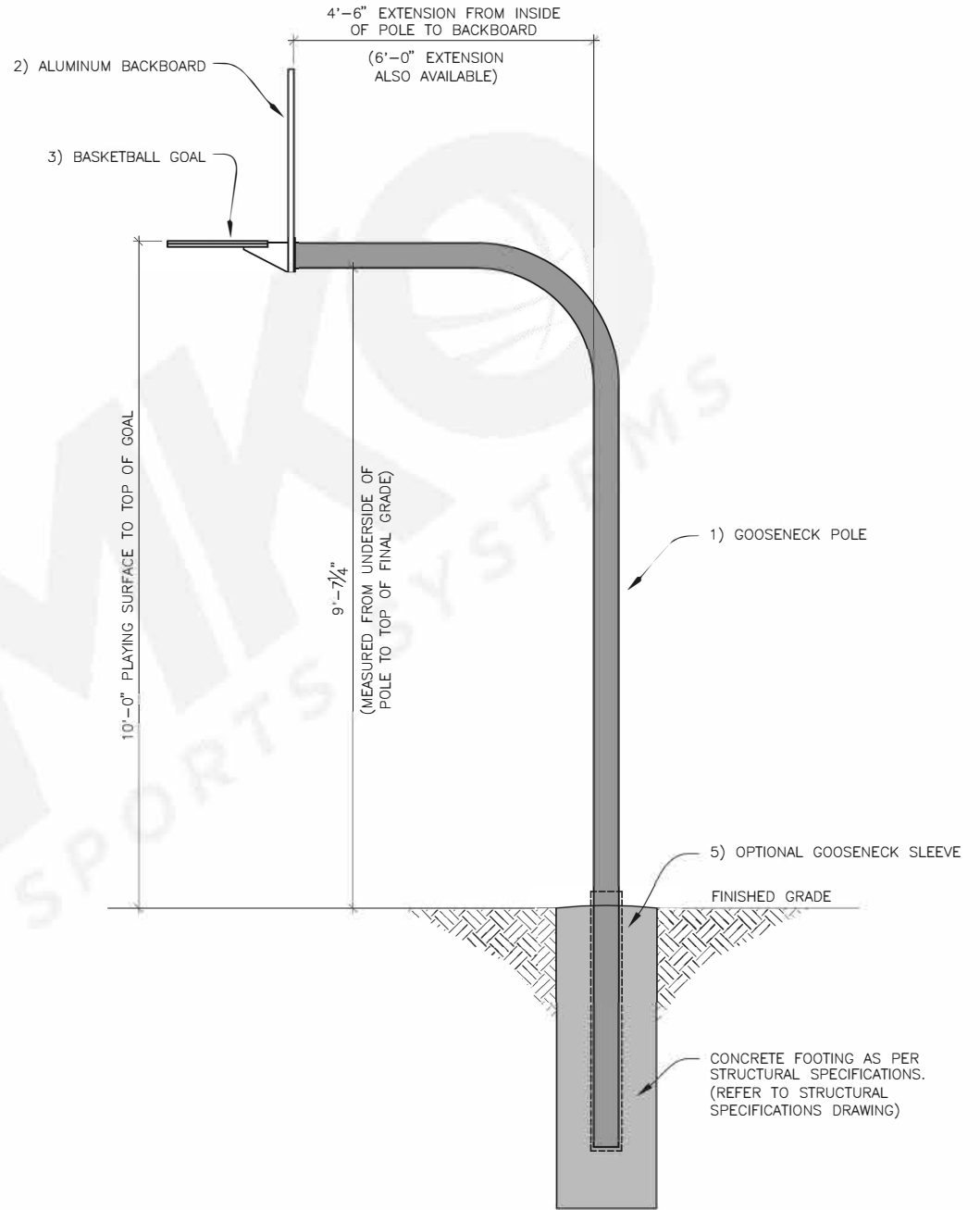
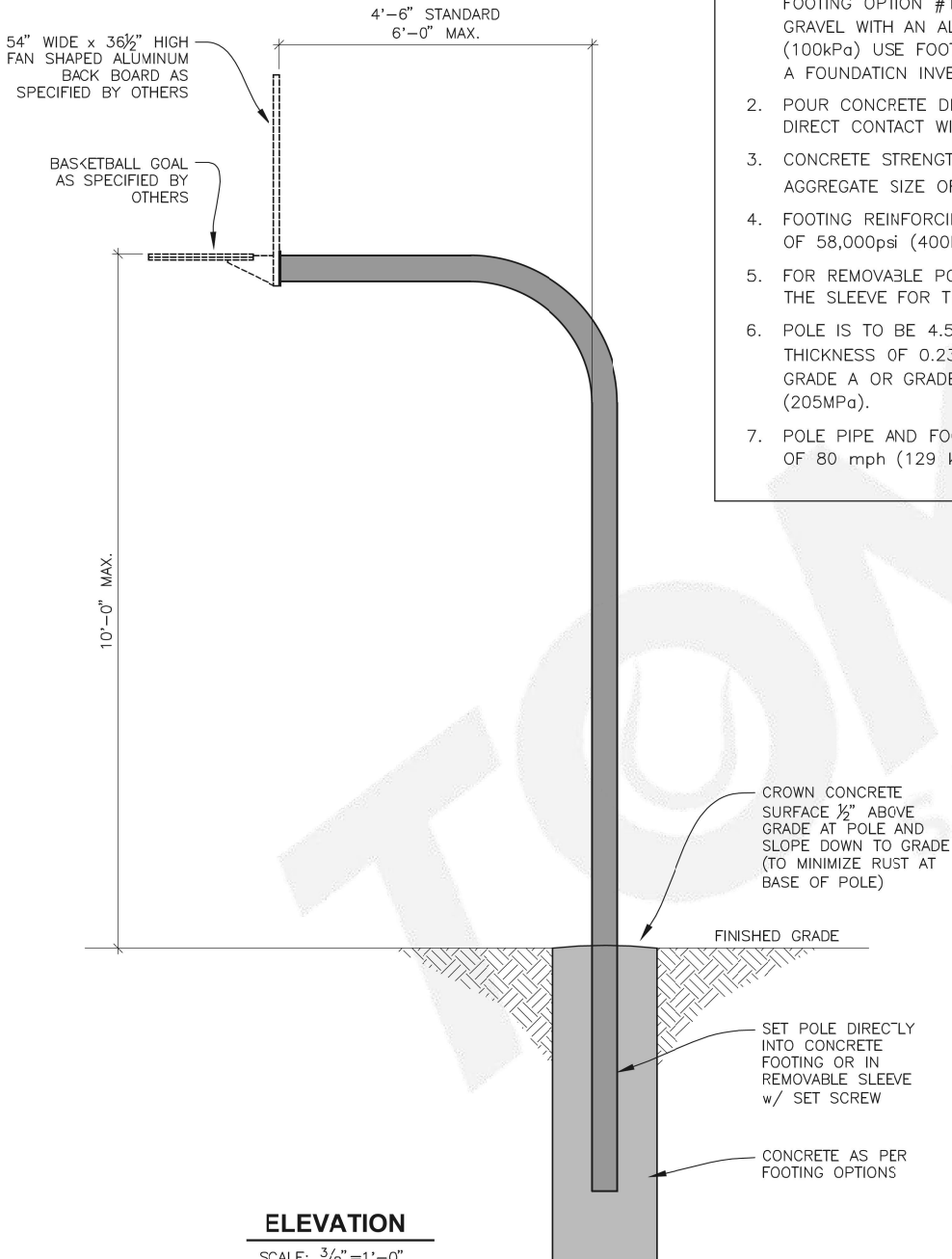


**SPECIFICATIONS – GOOSENECK BASKETBALL SYSTEM (TOMKO SB-GNAF5)**

1) GOOSENECK POLE: CODE: SB-GNP	- 4.5" O.D., SHEDULE40, HOT DIPPED GALVANIZED STEEL, 0.237" WALL THICKNESS, c/w 4'-6" EXTENSION - 200lbs. 6' EXTENSION ALSO AVAILABLE
2) ALUMINUM BACKBOARD: CODE: SB-AFB	- FAN SHAPED 54"W x 36½"H CAST ALUMINUM w/ REINFORCING RIBS - VARIOUS MOUNTING CONFIG., w/ ½" THICK 6"x6" GOAL MOUNTING AREA - POWDER COATED WHITE & RUST RESISTANT DUE TO ALUMINUM DESIGN - ORANGE PAINTED SHOOTERS TARGET - STANDARD ON ALUMINUM BOARD - ¼" THICK FACE & ½" THICK EDGING ON PERIMETER - 47lbs
3) ULTIMATE DOUBLE GOAL: CODE: SB-UFM3	- ¼" THICK BACK PLATE, 2-5/8" COLD ROLLED STEEL RIMS & 1 PIECE FORMED BRACE - THIS GOAL IS STANDARD w/ SB-GNAF5 - OTHER GOALS ALSO FIT THIS SYSTEM, 5"x5" HOLE PATTERN
4) HEAVY DUTY NET: CODE: SB-144	- 6.0mm STANDARD NYLON CLOTH NET. H.DUTY CHAIN NETS ALSO AVAILABLE
5) GOOSENECK SLEEVE: CODE: SB-GNS	- FITS 4.5" O.D. POST, c/w SET SCREW TO HOLD POST IN PLACE (46" LONG) * SLEEVE TO BE SET 43" INTO GROUND AND HAVE 3" EXT. ABOVE GRADE TO FASTEN SET SCREW



**GOOSENECK BASKETBALL SYSTEM**

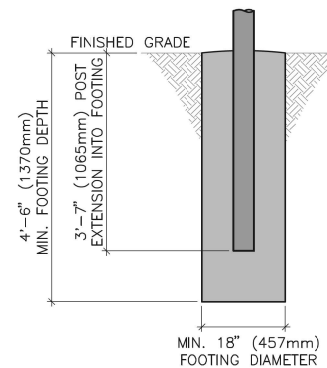


**ELEVATION**

SCALE:  $\frac{3}{8}'' = 1'-0''$

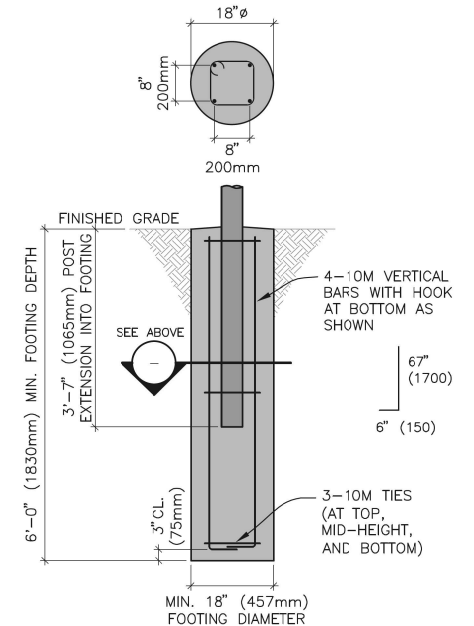
STRUCTURAL SPECIFICATIONS

- EXCAVATE PGST HOLE WITH DIAMETER AND DEPTH SHOWN IN THE DIFFERENT DIAGRAM OPTIONS. FOR GOOD SOIL CONDITIONS SUCH AS SANDY GRAVEL OR GRAVEL WITH AN ALLOWABLE SOIL BEARING CAPACITY OF 2000psf (100kPa) OR BETTER, USE FOOTING OPTION #1. FOR POOR SOIL CONDITIONS SUCH AS CLAY, SAND, OR SILTY GRAVEL WITH AN ALLOWABLE SOIL BEARING CAPACITY OF LESS THAN 2000psf (100kPa) USE FOOTING OPTION #2. FOR FOOTINGS IN ORGANIC CLAYS AND PEATS, A FOUNDATION INVESTIGATION BY A GEOTECHNICAL ENGINEER WILL BE REQUIRED.
- POUR CONCRETE DIRECTLY INTO THE EXCAVATED HOLE SO THAT CONCRETE IS IN DIRECT CONTACT WITH THE SOIL FOR THE FULL FOOTING DEPTH.
- CONCRETE STRENGTH TO BE A MINIMUM OF 3000psi (20MPa) WITH A MAXIMUM AGGREGATE SIZE OF  $\frac{3}{4}''$  (20mm) AND A SLUMP OF 3" (75mm).
- FOOTING REINFORCING BARS TO BE GRADE 40 WITH A MINIMUM YIELD STRENGTH OF 58,000psi (400MPa).
- FOR REMOVABLE POLES ENSURE THAT THE REMOVABLE POLE HAS A TIGHT FIT TO THE SLEEVE FOR THE FULL SLEEVE DEPTH.
- POLE IS TO BE 4.5" (114mm) OUTSIDE DIAMETER SCHEDULE 40 PIPE, WITH A WALL THICKNESS OF 0.237" (6.02mm), HOT DIPPED GALVANIZED, AND MEETING ASTM A53 GRADE A OR GRADE B SPECIFICATIONS WITH MINIMUM YIELD STRENGTH OF 30,000psi (205MPa).
- POLE PIPE AND FOOTING SIZES HAVE BEEN DESIGNED FOR A MAXIMUM WIND LOAD OF 80 mph (129 kph).



**FOOTING OPTION #1**

N.T.S. (GOOD SOIL CONDITIONS)



**FOOTING OPTION #2**

N.T.S. (POOR SOIL CONDITIONS)